



mjk

HyXo Oy

P.O. Box 16 (Palokorvenkatu 2)
FI-04261 Kerava, Finland
Tel. +358 10 417 4500
Fax +358 10 417 4501
hyxo@hyxo.fi • www.hyxo.com

MJK Automation A/S
Byageren 7
DK-2850 Nærum
Denmark

Tel.: +45 45 56 06 56
Fax: +45 45 56 06 46

mjk@mjk.com
www.mjk.com

MagFlux[®]

ELECTROMAGNETIC FLOWMETERS



MagFlux[®]

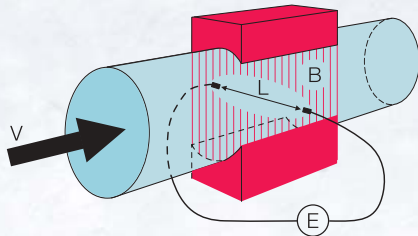
MagFlux[®] electromagnetic flowmeters are a competitive product, which satisfies all demands on simple, precise and uncomplicated flow measurement.

MagFlux[®] is very suitable for measuring of flow in all kinds of conductive liquids, including pot water, wastewater and sludge.

MagFlux[®] flowmeters has great performance, and are developed for confident and uncomplicated flow measurement through many years.



MagFlux[®] electromagnetic flowmeters are based on Faraday's law for electro-magnetic induction. A conductive fluid is passed through a magnetic field in the sensor, by which a signal proportional to the velocity of the fluid can be measured. Since the internal diameter of the sensor is known, the volumetric flow can simply be calculated in the transmitter.



The electromotoric voltage induced between the electrodes:

$$E = L \times B \times V \quad \text{where}$$

- E:** Induced electromotoric voltage.
- L:** The distance between the electrodes corresponding to the internal diameter of the sensor (DN).
- B:** The strength of the magnetic field.
- V:** The velocity of the fluid.

The voltage *E* is measured by the transmitter, that convert the signal to a volumetric flow. The transmitter is equipped with an analog 4 - 20 mA output and digital outputs for total volume, excess of limit values etc.

MagFlux[®] flowmeters are generally characterized by the following features:

- Great dynamic measuring range with an accuracy up to 0.2% of reading.
- 2-line text display with english text.
- User definable measuring units.
- Compact or separate mounting of transmitter.
- mA output for flow in one or both directions.
- Pulse output with reset.
- Detecting of empty pipe.
- Password protection.
- Optimal signal resolution for great S/N ratio and large measuring range.
- Automatic self diagnostic function for indication and logging of errors.
- IP 65 / IP 68 enclosure.
- Automatic electrode cleaning (option).

MagFlux®

Type:	7100	7200	7300	7400	7500	7600
Mounting:	Flange	Flange	Wafer	Clamp	Flange	Flange
Nom. pressure:	PN16-64	PN16-64	PN10	PN10	PN10-64	PN10-64
Dimensions:	DN25-400	DN40-600	DN20-100	DN25-150	DN20-400	DN40-1200
Accuracy:	± 0,5-1 %	± 0,5-1 %	± 1 %	± 0,2 %	± 0,2-0,5 %	± 0,2-2 %
Material, housing:	Carbon steel	Carbon steel	AISI304/316	AISI304/316	Carbon steel	Carbon steel
lining:	PTFE	Hard rubber	Teflon®	Teflon®	Teflon®	Hard rubber
electrodes: ¹⁾	AISI316L	AISI316L	AISI316L	AISI316L	AISI316L	AISI316L
Process temperature:	-30 ... 130 °C	-10 ... 100 °C	-40 ... 120 °C	-40 ... 150 °C	-40 ... 150 °C	-25 ... 110 °C
Enclosure:	IP67-68	IP67-68	IP66	IP66	IP66-68	IP66-68

¹⁾ Electrodes are also available in Hastelloy B, Hastelloy C, and Titanium.

MJK is a leading manufacturer of measuring and control equipment for waterworks and waste water treatment plants.

MJK also supply through a network of own companies and authorized distributors all over the world.

MJK manufactures a complete program of measuring and control equipment comprising:

- Level meters.
- Magnetic flowmeters.
- Flowmeters and flumes/weirs.
- pH and Redox meters.
- Sludge and turbidity meters.
- Data recording and transmission units.
- Digital indicators.
- Measuring and insulation amplifiers.
- Surge and lightning protectors.
- Liquid samplers.